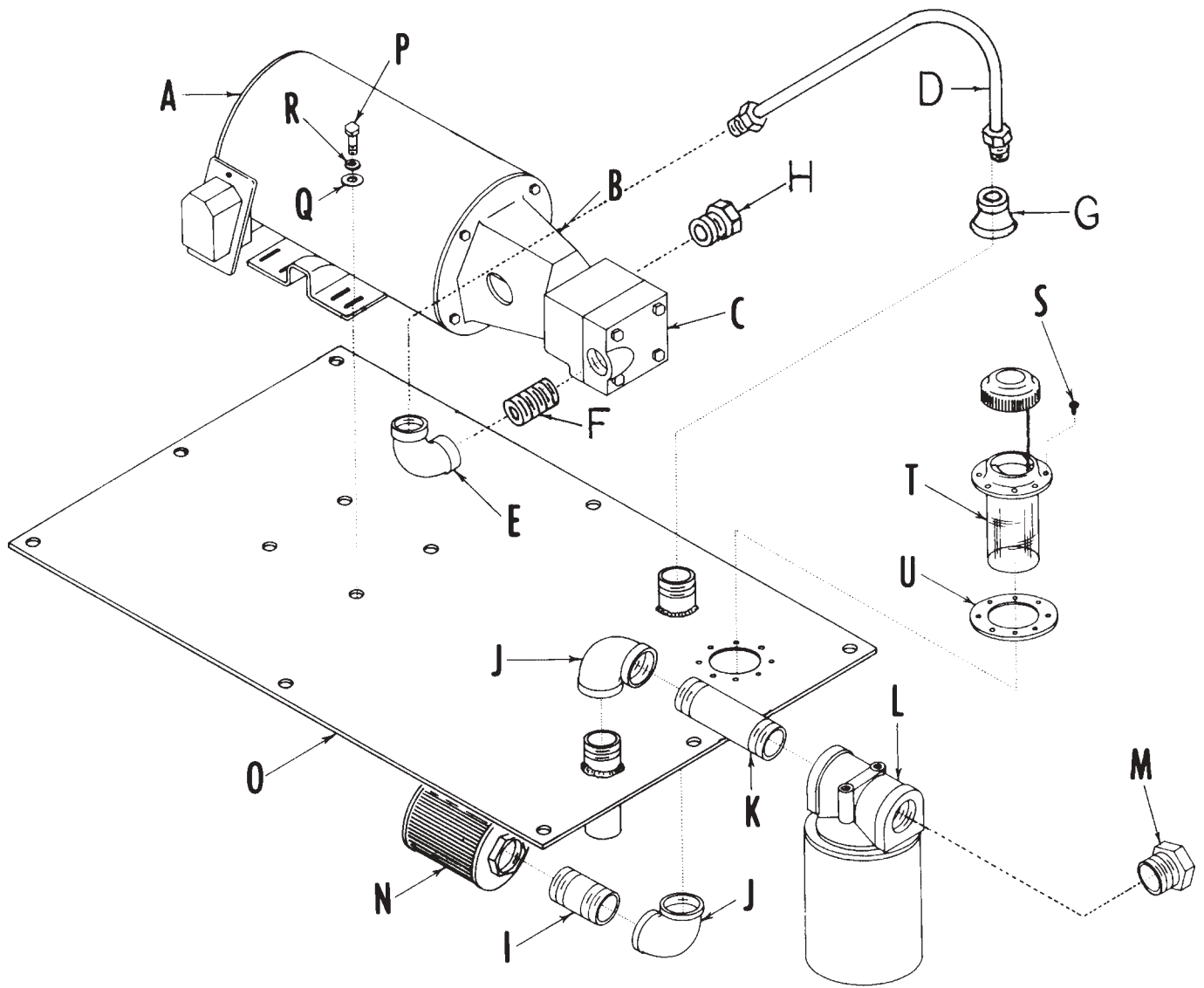
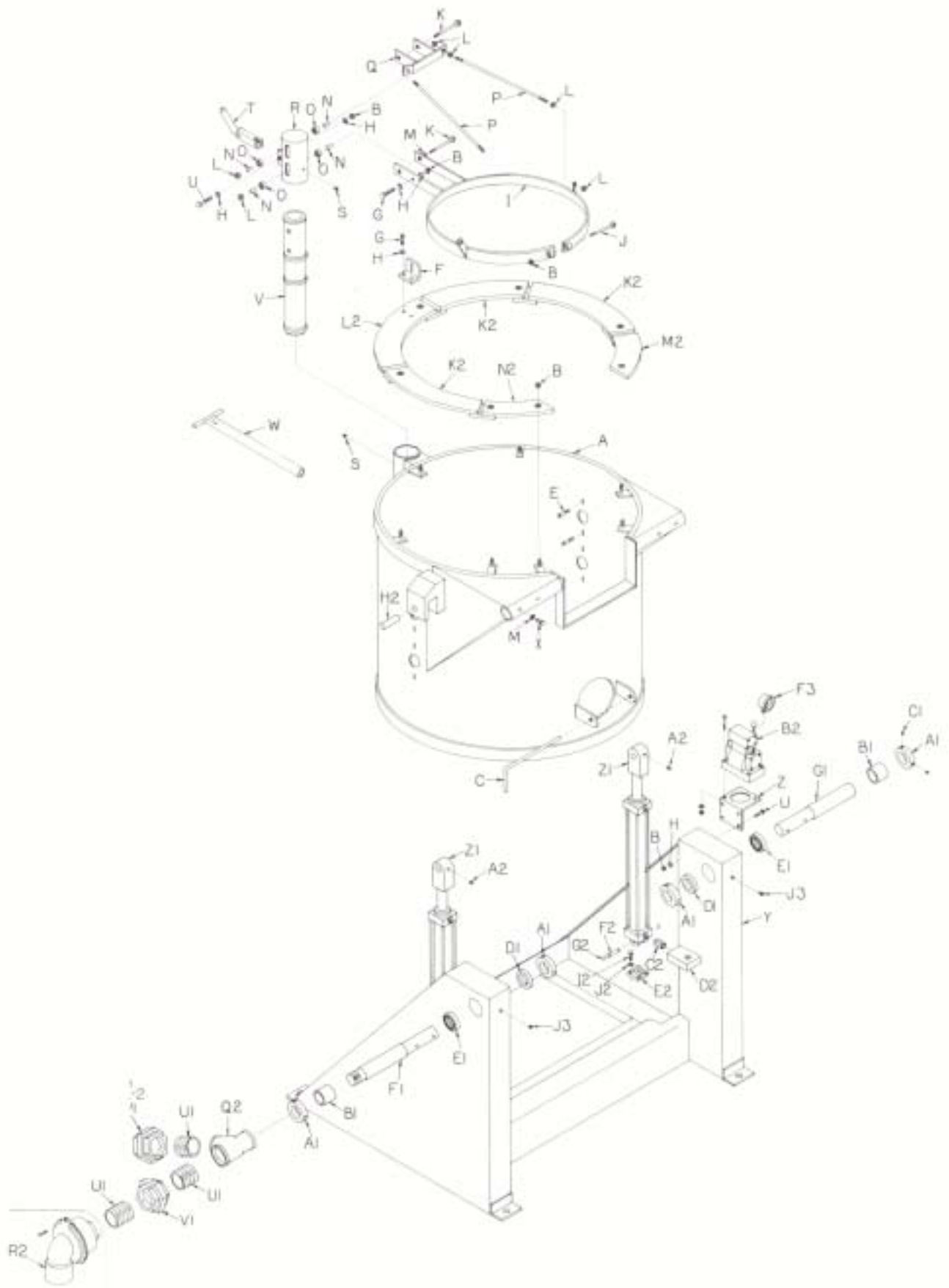


<b>A</b>	<b>004114</b>	Motor	1	<b>L</b>	<b>060075</b>	Return filter	1
<b>B</b>	<b>060077</b>	Mounting adaptor	1	<b>M</b>	<b>003353</b>	3/4" x 3/8" red. bushing	1
<b>C</b>	<b>060060</b>	Gear pump	1	<b>N</b>	<b>060078</b>	Fluid pick up strainer	1
<b>D</b>	<b>060035</b>	11 1/2" hose	1	<b>O</b>	<b>102701</b>	Reservoir top	1
<b>E</b>	<b>003387</b>	3/8" extra heavy elbow	1	<b>P</b>	<b>000708</b>	1/4" x 1" hex hd bolt	4
<b>F</b>	<b>003026</b>	3/8" x H close nipple	1	<b>Q</b>	<b>002111</b>	1/4" flat washer	4
<b>G</b>	<b>003201</b>	3/8" x 3/4" x H red. coupling	1	<b>R</b>	<b>002112</b>	1/4" lock washer	4
<b>H</b>	<b>003337</b>	1/2" x 3/8" red.bushing	1	<b>S</b>		10-32 self tapping screw	6
<b>I</b>	<b>003061</b>	3/4" close nipple	1			(included in T)	
<b>J</b>	<b>003375</b>	3/4" elbow	1	<b>T</b>	<b>060079</b>	Filler breather	1
<b>K</b>	<b>003068</b>	3/4" x 5" nipple	1	<b>U</b>		Breather gasket (incl. in T)	1





**T-200 TILT FURNACE - (MAIN ASSEMBLY)**

<b>OPN</b>	<b>Description</b>	<b>Qty.</b>	<b>OPN</b>	<b>Description</b>	<b>Qty.</b>
A 102520	Steel shell assembly	1	B2 060000	Valve assembly (made up of)	1
B 002115	3/8" hex head nuts	18	060007	Directional valve	
C 102527	Plug retainer bar	1	060003	Relief valve	
F 101052	Lid swing stop	1	060006	Subplate	
G 001207	3/8" x 1 Ω" hex head bolts	3	C2 003021	3/8" x 1" nipple	2
H 002121	3/8" flat washers	12	D2 060002	Check valve	2
I 102581	Lid band complete	1	E2 060080	Pivot bracket	2
J 001213	3/8" x 3" hex head bolt	1	F2	Lower clevis pin (included with Z1)	2
K 001517	Ω" x 5" hex head bolt	2	G2	Snap rings (Included with Z1)	4
L 002024	Ω" hex lock nut	10	H2 060081	Upper clevis pin 1 3/8"	2
M 002131	Ω" flat washers	4	I2 001208	3/8" x 1 3/4" hex head bolt	8
N 101093	Bearing spacers	4	J2 002122	3/8" lock washers	8
O 002467	Bearings R8-78	4	K2 102564	Solid seal section	3
P 102586	Support rods	2	L2 102566	Lid stop seal section	1
Q 102587	Lid lift bracket	1	M2 102561	Right mouth seal section	1
R 101081	Swivel pipe	1	N2 102568	Left mouth seal section	1
S 010005	Drive in grease fittings	3	Q2 003303	2 1/2 x 1 Ω" x 2" tee	1
T 102610	Fulcrum assembly	1	R2 0039903	2" flexo joint	1
U 001207	3/8" x 1 Ω" hex head bolts	5	A3 003140	2" close nipple	1
V 101095	Jack tube	1	F3 003915	Spark transformer	1
W 102062	Lid lift lever	1	G3 003851	Start stop enclosure	1
X 001557	Ω" x 1 Ω" hex head bolts	4	H3 004104	UV chassis	1
Y 102631	Base	1	I3 060051	Pressure gauge	1
Z 102648	Hydraulic switch mount	2	J3 002454	Grease fittings	
A1 102084	Fulcrum bar collar	4			
B1 102088	Bearing retaining sleeve	2			
C1 001602	Ω" x Ω" socket hd set screw	8			
D1 102085	Seal	2			
E1 102086	Bearing	2			
F1 102649	Fulcrum bar, blower side	1			
G1 102650	Fulcrum bar, hydraulic side	1			
R1 003142	2" x 3" pipe nipple	1			
Z1 060020	Hydraulic cylinders	2			
A2	Socket head set screw (Included in Z1)	2			